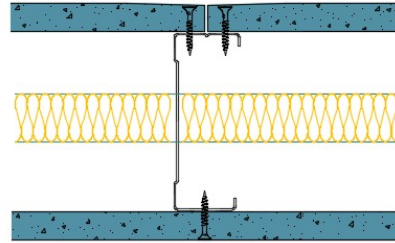


## 92-B-54F(25) - SPEEDLINE System Data Sheet - Version V1 (24-10-23)

SPEEDLINE 92mm 'C' Stud Partition @600mm Ctrs,  
with BG Gyproc 15mm SoundBloc F each side,  
25mm APR



### System Performance Breakdown

Fire Resistance:

BS476 Part 22:1987:

Test Ref & Date or Applied Ref & Report:

Max Height:

Thickness:

Duty Grade: BS 5234: Part 2:1992:

Sound Insulation:

**60/60 Minutes** (Integrity/Insulation).

**BMT/FEP/F14106 - BRE Report P102396-1011A**

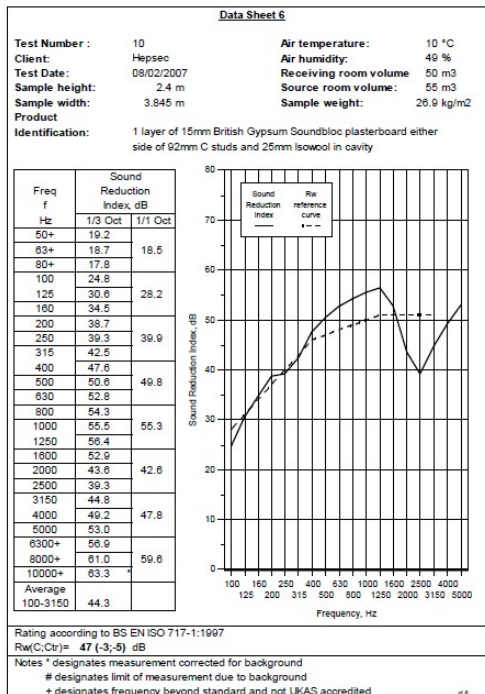
**Refer to Speedline Specification Clause**

**124 mm.** (At Base Track, Excluding Finishes)

**Heavy - Annexes A-F**

**47 R<sub>w</sub>dB**, Date Tested or Assessed Against - 92-B-54(25)

### SRL



TESTED AT ONE OF THE UKAS  
ACCREDITED LABORATORIES  
BELOW

B.T.C (H-Ref on Graph)	
B.R.E	
AIRO	
S.R.L	